

# 2025 Pre-Departure Guide



Flinders University  
Academy

# Before you arrive

## ARRANGING A STUDENT VISA

You are required to apply for a student visa sub class 500 online regardless of your chosen course.

Use the Document Checklist Tool [immi.homeaffairs.gov.au/visas/web-evidentiary-tool](https://immi.homeaffairs.gov.au/visas/web-evidentiary-tool) to help you find out the documents you need to provide with your student visa application.

## FEES

As an international student, you are required to pay your first semester tuition fees before entering Australia. The amount required depends on your enrolled course and will be stated on your Letter of Offer. You will not receive an invoice for subsequent semesters, but you can check your fee account from your Student System.

## TIME ZONES

Australia is divided into three time zones, with Adelaide coming under Australian Central Standard Time (ACST).

### Time difference between Adelaide and overseas:

Indonesia	2.5h	Delhi, India	5.5h
China, Malaysia, Singapore	1.5h	United Arab Emirates	5h
USA	18h	Nairobi, Kenya	7.5h



## FLIGHTS

You can fly to Adelaide from anywhere in the world, and there are many direct flights available.

### Estimated flight times to Adelaide\*:

Kuala Lumpur	7.5h	Hong Kong	9h
Buenos Aires	19h	New Delhi	10h
Dubai	13h	London	22h
Beijing	13h	Hanoi	11.5h
Tokyo	9h	Lagos	22h
Guangzhou	9h	Nairobi	16h
Singapore	7h		



# When you arrive

## DOCUMENTS TO BRING WITH YOU

Official documents you will need on arrival in Australia:

- valid passport and student visa grant letter
- offer letter from Flinders University
- Confirmation of Enrolment (CoE) issued by Flinders University
- receipts of payments (e.g. tuition fees, OSHC, bank statements etc.)
- original or certified copies of your academic transcripts and qualifications
- other personal identification documents (e.g. birth certificate, ID card, driver's licence)
- medical records and/or prescriptions

## MEET & GREET

To make your start in Adelaide as easy as possible, we offer a free meet and greet service for new international students. Please make full use of this service, especially if you have not travelled to Australia before and have no friends or family in Adelaide. This is the best way to avoid stress upon arrival! Please email [students.academy@flinders.edu.au](mailto:students.academy@flinders.edu.au) if you wish to book a Meet & Greet.

## DECLARE IT

Australia has strict rules to protect it from biosecurity risks. To know what you can and cannot bring, visit [abf.gov.au/entering-and-leaving-australia/can-you-bring-it-in/overview](https://abf.gov.au/entering-and-leaving-australia/can-you-bring-it-in/overview)


## TRAVEL MONEY


Bring a small amount of cash in Australian dollars for food, taxis and public transport. Travel with either a VISA or MASTERCARD credit or debit card.


## CLOTHING

Summer in Australia is from December to February, autumn from March to May, winter from June to August, and spring from September to November.

In Adelaide, the hottest months are January and February. If you arrive in June or July, the coldest months of the year, you may need to bring or buy winter clothing and blankets.

 **Summer (December to February)**  
25°C to 35°C / 77°F to 95°F

 **Autumn (March to May)**  
20°C to 25°C / 68°F to 77°F

 **Winter (June to August)**  
10°C to 15°C / 50°F to 59°F

 **Spring (September to November)**  
20°C to 25°C / 68°F to 77°F

To check the weather visit [bom.gov.au](https://bom.gov.au)



# Welcome to Adelaide, South Australia

Adelaide is alive and vibrant. Local fresh food markets, exciting restaurants and cafés, international sporting events and world-renowned arts festivals are just a few of the reasons that studying in Adelaide gives you a quality of life you will not find anywhere else in Australia.

More than 38,000 students from 130 countries choose to study, live, and work in Adelaide. The city is designed for life.

### Helpful links

[www.studyadelaide.com](http://www.studyadelaide.com) · [www.southaustralia.com](http://www.southaustralia.com)

**Top 30**  
**Adelaide is ranked in the top 30 student cities globally\***  
 QS Best Student Cities 2024

## Campuses



### BEDFORD PARK

Located just 12km south of the centre of Adelaide, the Bedford Park campus is Flinders' main campus. It's a spacious, elevated site with panoramic views to the coast and over the city. Our Student Hub offers 24/7 study spaces and access to all student services in one convenient location. It is also a short walk from Flinders Sturt precinct, and on-campus student accommodation, Flinders Living.

### TONSLEY

Flinders' Tonsley campus is a \$120 million hub of innovation which centrally locates the University's teaching and research in computer science, artificial intelligence, defence and national securities, autonomous vehicles, information technology, engineering and mathematics. Along with some of Adelaide's biggest businesses and globally-recognised organisations, Tonsley is also home to the Flinders Medical Device Research Institute (MDRI) and Institute for Nanoscale Science & Technology. This campus is also an incubator for entrepreneurs and future employers who are creating next generation start-ups through the Flinders New Venture Institute.



### FLINDERS CITY CAMPUS

Spanning eight levels, with multiple state-of-the-art teaching spaces, the Flinders City Campus is designed for innovative and adaptable learning, catering to an extensive range of study programs. Every floor has dedicated spaces for students to come together, learn from industry experts and be inspired by a world of learning possibilities. Adjacent to the Adelaide Railway Station, our new city campus immerses you in the hustle and bustle, and vibrant arts culture of the CBD. Whether you're craving a quick bite between classes or planning a Friday night out with friends, you'll soon discover why our city ranks among the top 40 student cities worldwide. Easy access to public transport allows you to explore the city centre and beyond, with connection to our Tonsley and Bedford Park campuses via the door-to-door rail link.



# Campus Life

## ACADEMY STUDENT SERVICES TEAM

The Student Services team provides support to all Academy students. Our dedicated team offers services including advice on enrolment, academic, social connection and more.

[students.academy@flinders.edu.au](mailto:students.academy@flinders.edu.au)

## FLINDERS UNIVERSITY STUDENT ASSOCIATION

Flinders University Student Association (FUSA) is the student organisation that represents the rights and interests of students.

[fusa.edu.au/about](http://fusa.edu.au/about)

Join a club via: [students.flinders.edu.au/uni-life](http://students.flinders.edu.au/uni-life)

## OASIS

OASIS is a student community wellbeing centre focused on supporting the physical, emotional, social and spiritual needs of students. Most international students visit the Oasis community centre for studies, social activities and to meet staff and other students.

[oasis.flinders.edu.au](http://oasis.flinders.edu.au)

## FLINDERS UNIVERSITY SPORT AND FITNESS

Flinders One Sport and Fitness is open 7 days per week for 24 hours a day and offers a range of fitness and wellness activities.

To join: [onesportandfitness.com.au](http://onesportandfitness.com.au)

## CAREERS AND EMPLOYABILITY

If you need help in planning your career, broadening your skills and experience and connecting you to potential employers and industry professionals.

[students.flinders.edu.au/support/careers](http://students.flinders.edu.au/support/careers)

## FLINDERS UNIVERSITY MUSEUM OF ART

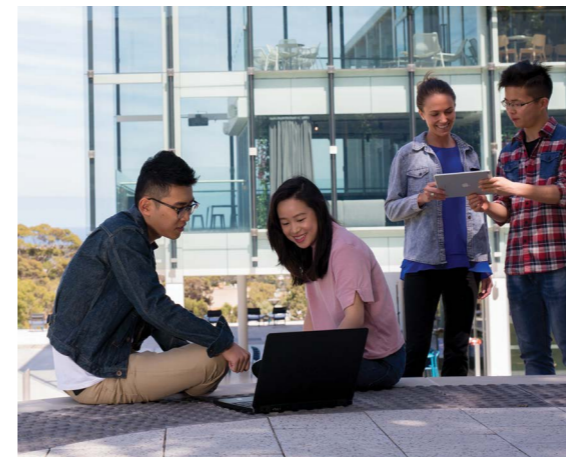
Interested in art? Check the collection at FUMA: [flinders.edu.au/museum-of-art](http://flinders.edu.au/museum-of-art)

## STUDY SPACES

A variety of spaces and resources for students are available on campus. You can use the PCs, connect your own device using Wi-Fi on campus or print at designated printing areas. [flinders.edu.au/campus/bedford-park/facilities-services/technology-in-hub](http://flinders.edu.au/campus/bedford-park/facilities-services/technology-in-hub)



The Hub



The Hub

# Getting Around Adelaide

## BUS, TRAIN, AND TRAM

Adelaide Metro run public transport in Adelaide. The website [adelaidemetro.com.au](http://adelaidemetro.com.au) gives you access to general customer information as well as fares, timetables, new and special offers.

## BIKES

You can plan to ride to Flinders using either bike lanes or secondary roads and explore Adelaide via bike. Make sure you know the road rules and safety. Bike route maps are a good way to plan your route, and these can be downloaded from: [sa.gov.au/topics/driving-and-transport/cycling/cycling-maps](http://sa.gov.au/topics/driving-and-transport/cycling/cycling-maps)

## DRIVING IN SOUTH AUSTRALIA

As a visitor with a temporary visa, you can drive in South Australia but must only drive the type of vehicle authorised by your licence. You must always carry your current driver's licence. If your licence is not in English, you must carry an International Driving Permit or an English translation. Make sure to know the road rules and safety: [sa.gov.au/topics/driving-and-transport/roads-and-traffic/australian-road-rules](http://sa.gov.au/topics/driving-and-transport/roads-and-traffic/australian-road-rules)

## PARKING ON CAMPUS

Paid parking is available at Bedford Park campus for students, visitors and staff.

For more information visit: [students.flinders.edu.au/uni-life/tonsley/parking-transport](http://students.flinders.edu.au/uni-life/tonsley/parking-transport)

## SHOPPING

Major supermarkets are:

Aldi: [aldi.com.au](http://aldi.com.au)

Coles: [coles.com.au](http://coles.com.au)

Drakes: [drakes.com.au](http://drakes.com.au)

Foodland: [foodlandsa.com.au](http://foodlandsa.com.au)

Woolworths: [woolworths.com.au](http://woolworths.com.au)

The Marion Shopping Centre is nearby Bedford Park campus and includes large department stores as well as speciality shops. [Westfield.com.au/marion](http://Westfield.com.au/marion)

Rundle Mall is next to the City Campus and is in the heart of the city of Adelaide. The mall offers shopping, dining and entertainment with over 100 retail stores and services. [rundlemall.com](http://rundlemall.com)



Glenelg



Cleland Wildlife Park

# Finance

## MONEY

To cover your initial expenses, you will need between \$3,000AU and \$6,000AU. On arrival you can open a bank account and use either a debit or credit card to pay for rent, food and utilities. The four major banks in Australia are ANZ, Commonwealth Bank, National Australia Bank and Westpac. You will need your passport and some cash to open an account. Most Australian banks charge fees for a bank account or a banking service.

## WORKING IN AUSTRALIA

You can work a maximum of 48 hours per fortnight during the term and unlimited hours when your course is not in session.

For more information contact: [students.academy@flinders.edu.au](mailto:students.academy@flinders.edu.au)

There are several online employment websites which can assist you: [careerone.com.au](http://careerone.com.au) · [seek.com.au](http://seek.com.au) · [au.indeed.com](http://au.indeed.com)

## ADELAIDE COST OF LIVING ESTIMATES

Average weekly costs per week in \$AUD^:

Rent – City (shared)	\$300-\$600
Utility Bill (shared)	\$50
Groceries	\$60
Phone and internet	\$25
Public transport	\$15
Entertainment	\$80

^ Average student budget in Adelaide, calculated using the Study Australia cost of living calculator



# Accommodation

While you study at Flinders University Academy, you can choose to live on campus, at our city accommodation provider The Switch, or in rental accommodation.

## ON-CAMPUS LIVING

Flinders is the only South Australian university with on-campus accommodation. It is a 5-minute walk to classes and located in a safe, supportive and dynamic community of over 550 students. If you are over 18 you can choose to live in University Hall or Dierdre Jordan Village – both affordable and convenient options.

## CITY ACCOMMODATION

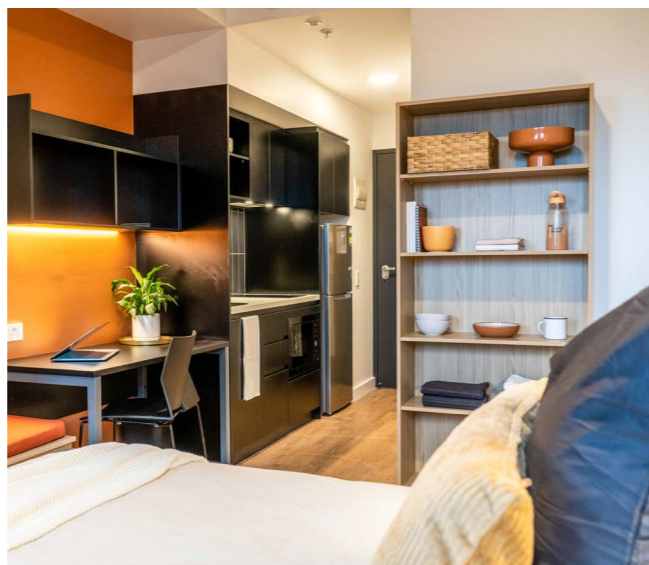
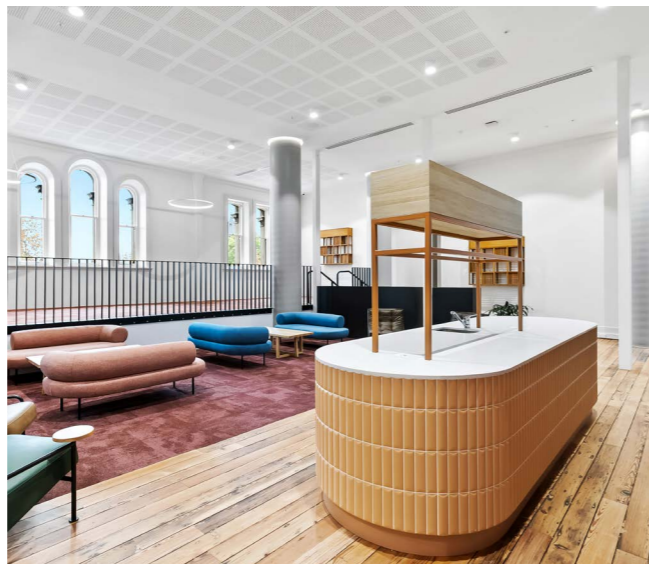
### The Switch

The Switch is Adelaide's newest and most innovative student accommodation. A co-living space that is re-defined for the younger generation and equipped with world-class amenities in an unbeatable inner CBD location – it's just a 22-minute train ride from our Bedford Park campus.

[switchliving.com.au/flinders-university](http://switchliving.com.au/flinders-university)

## HOMESTAY NETWORK

Flinders University has teamed up with the Australian Homestay Network (AHN) to provide international students with safe, affordable and welcoming homestay accommodation. If you are under 18 when you arrive in Australia, you must have an approved accommodation and welfare arrangements in place.



The Switch

# Health

## HEALTH INSURANCE

Overseas Student Health Cover (OSHC) is compulsory for international students. If you are bringing dependents, you must purchase family cover. Your OSHC must be valid for the length of your student visa. Flinders University Academy can arrange your OSHC for you through its partner Medibank.

More information on OSHC: [medibankoshc.com.au](http://medibankoshc.com.au)

Activate your Medibank OSHC now: [medibankoshc.com.au/oshcactivate](http://medibankoshc.com.au/oshcactivate)

## CAMPUS HEALTH SERVICES

### Health2Go

Health2Go offers a range of allied health services for vision, hearing, speech pathology and physiotherapy services available at the one easily accessible location. As these services are not included in your overseas student health cover, you will need to pay for the service. [health2go.com.au](http://health2go.com.au)

### Pharmacy

Flinders has an on-campus pharmacy located in the Plaza.

## Health, Counselling and Disability

The University provides a confidential health, counselling, and disability service to all currently enrolled students at our fully equipped and accredited Medical Centre. The doctors direct bill Medicare, Medibank Private, Bupa and Allianz Global Assistance. International students with a different private health insurer will need to pay up-front on the day of their appointment and have the money reimbursed by the insurance company.

[students.flinders.edu.au/support/hcd/health](http://students.flinders.edu.au/support/hcd/health)

# Safety

Australia is a safe and secure place to live and study. Like all major cities in the world, it is important to consider your personal safety in relation to where you are, what you are doing and who you are with. As you would at home, it is good practice to consider your personal safety and to develop a personal safety plan.

## Calling emergency services

Dial 000 for police, ambulance or the fire brigade. You can also dial 112 and the call will be forwarded to 000 even if the phone is locked. If you have a disability Text call emergency – for TTY or ASCII Dial: 106

## Campus security

Security officers are available 24 hours a day via 8201 2880 or email [security@flinders.com.au](mailto:security@flinders.com.au)

Security and Lost Property are located next to Academy Central.



# Flinders Academy Student Support

The Academy Student Services Team is your first point of contact. We are here to support you during your studies up until when you progress to Flinders University. We arrange study and social activities to help make your time at the Academy enjoyable and memorable.

Email: [students.academy@flinders.edu.au](mailto:students.academy@flinders.edu.au)  
[Flinders.edu.au/academy](https://flinders.edu.au/academy)